

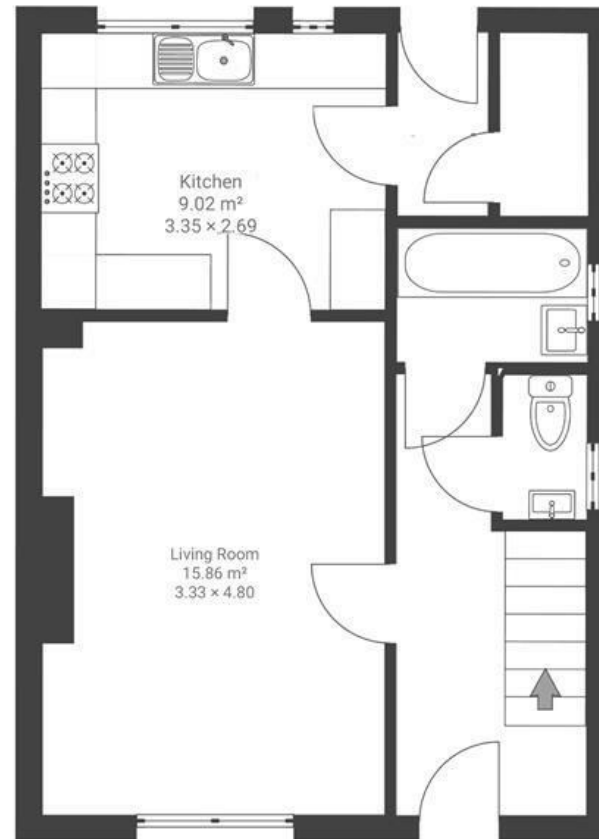
Wordsworth Road

HORFIELD

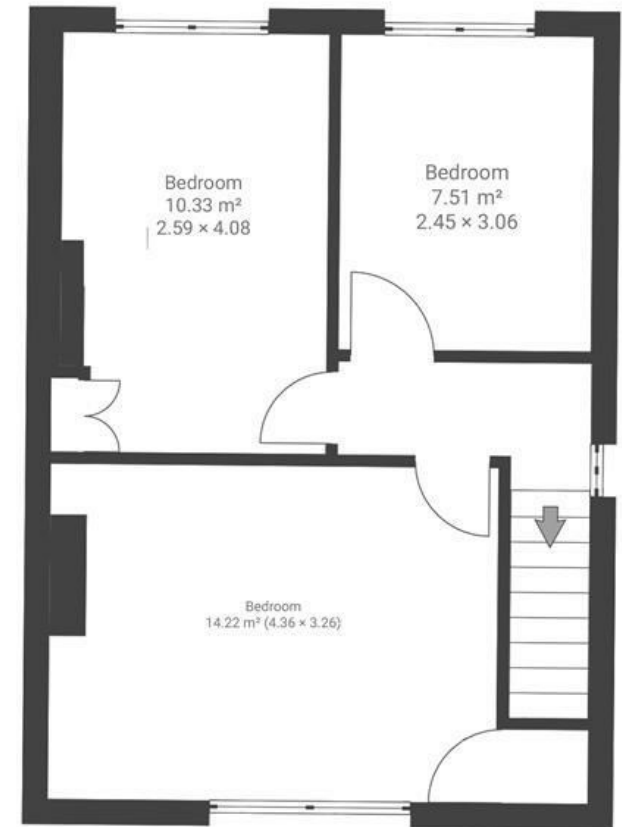
APPROXIMATE FLOOR AREA
79.1 SQM / 851 SQFT



GROUND FLOOR



FIRST FLOOR



Boardwalk

Wordsworth

HORFIELD, BRISTOL



£350,000



BS7 0DZ



3 Bedrooms



1 Bathrooms

"We have loved exploring Horfield, Lockleaze and beyond. Whether it is long walks in Stoke Park or coffee at the Community Café on Horfield Common, we love the ease of access to beautiful green spaces. Our husky loves to run around Muller Road Recreation Ground or the Lockleaze Sports Centre, and we regularly drop in to pubs and cafes on Gloucester Road. Our morning coffee in the long garden is a ritual, and the peace and quiet up here is a contrast to the noise of the city."

